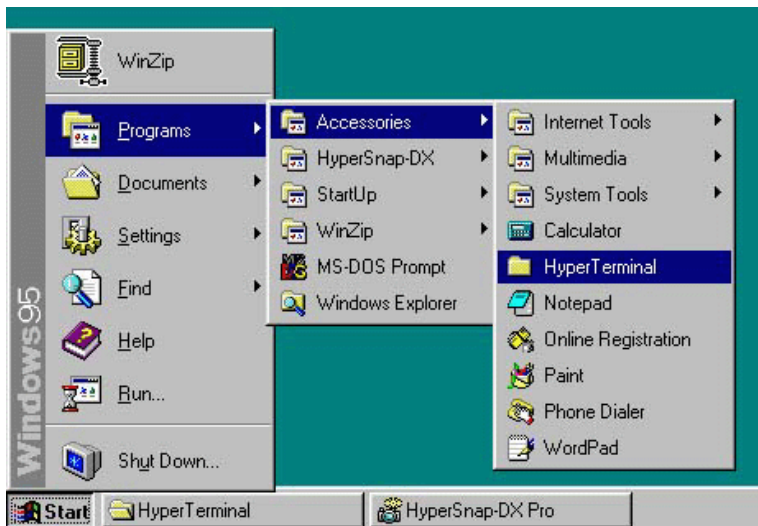


The upgrade files are available from www.bionetus.com. In addition to the upgrade file you will need the following:

- ▶ **BM3 (with power cable connected but powered off).**
- ▶ **Connect serial cable between device and com port of PC: The actual com port number (usually 1 to 4) will vary depending on your computer configuration.**

1. **Go to "HyperTerminal" from the "Start" button by clicking as shown in Fig.1.
Start -> "Program" -> Accessories" -> "Hyper Terminal" folder.**

Fig. 1



2. **Double click the HyperTerminal execution file "Hypertrm". (Fig. 2)**

Fig. 2



3. In the Connection Description. Type Name as "Program Upgrade" or any name you choose and take the icon which is shown in Fig.3

Fig. 3



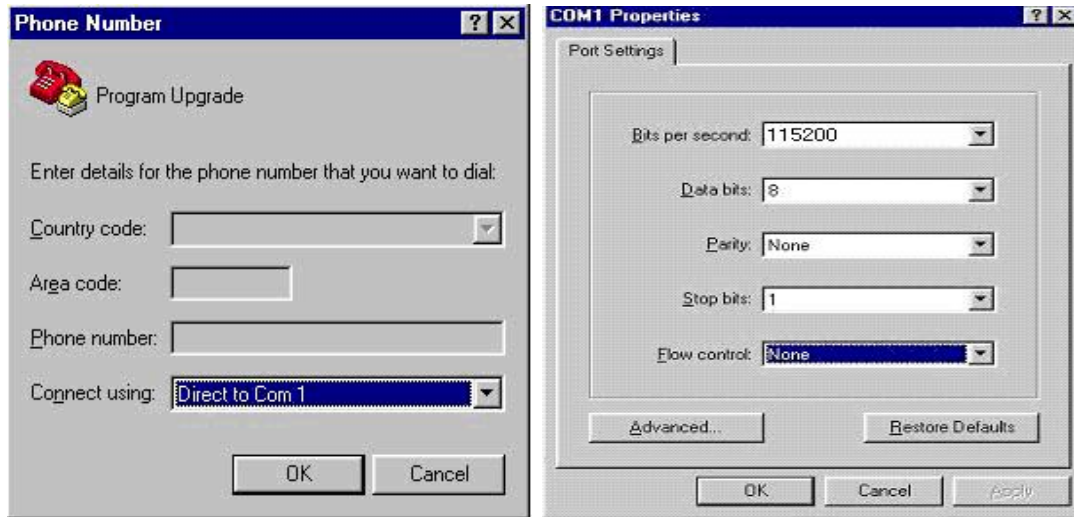
4. In Fig. 4, Phone Number window, there are 4 blanks but you can just fill the last one ("Connect using") as Direct to Com1 or Direct to Com2 (It may show up as just Com1, Com2, Or Com3 depending on your computer configuration). Click the OK button.

Fig. 4

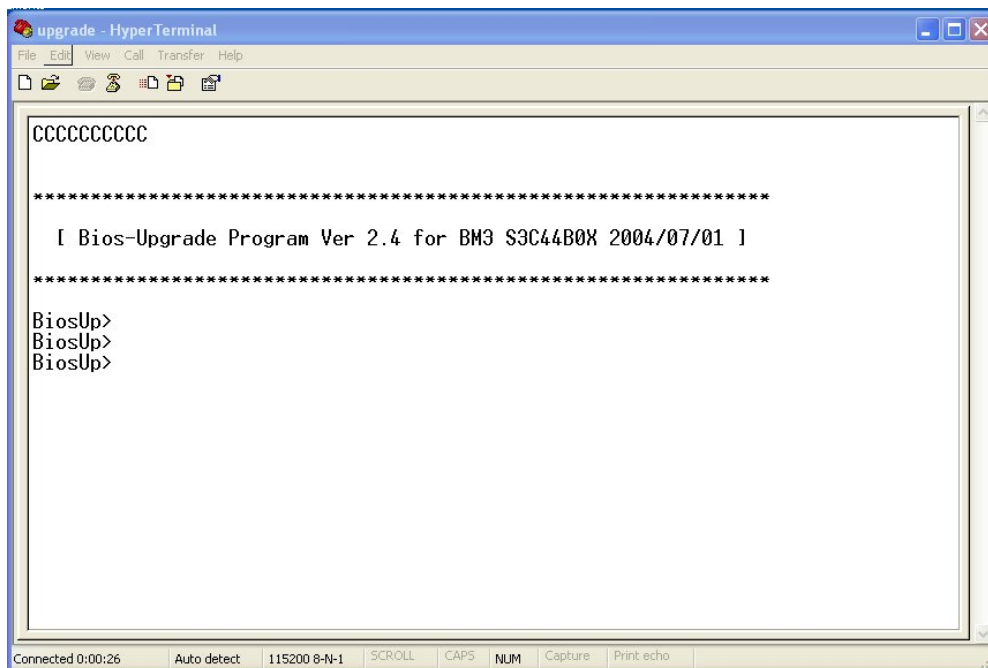


- 5. In the COM1(COM2) properties fill in the blanks as shown in Fig.5. Click the OK button.

Fig.5

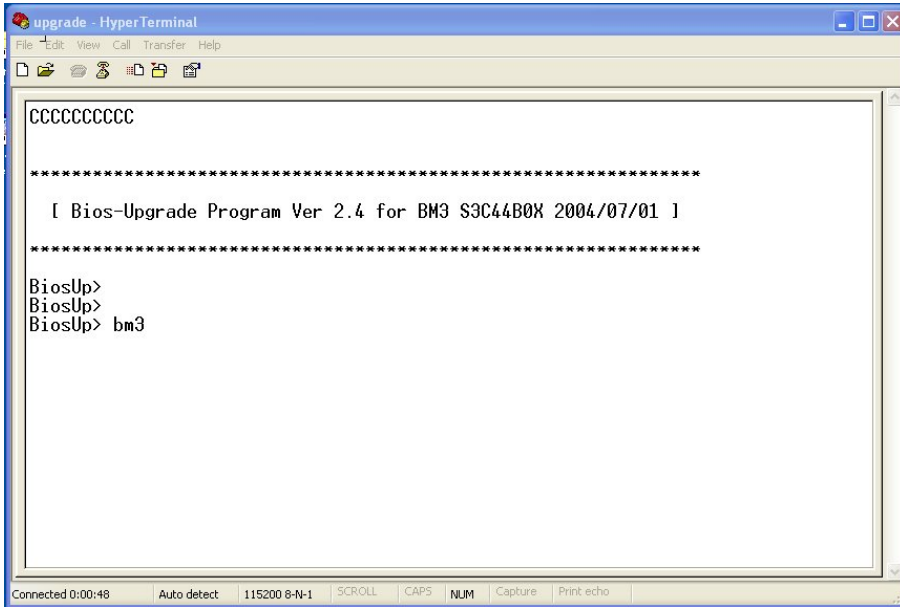


- 6. In the COM1(COM2) properties fill the blank. Click the OK button. Bit per second is 115200. The rest is same.
- 7. Turn on the power to the BM3 and rapidly press the enter key on the PC until the Hyperterminal window appears as below ► **If BM3 boots normally, power off the BM3 and try again.**



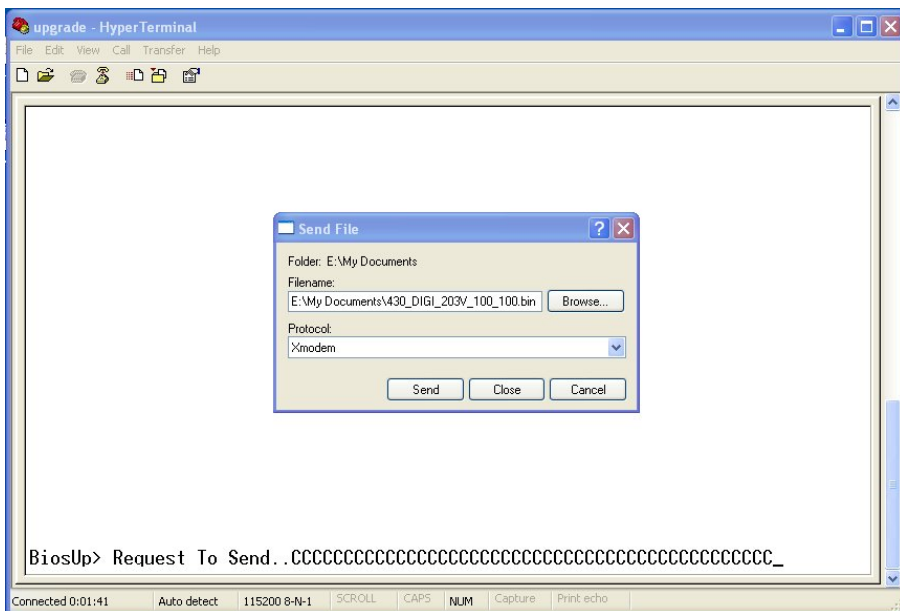
[Bios-Upgrade Program Ver 2.2 for BM3 S3C44B0X 2002/11/08]

BiosUp>

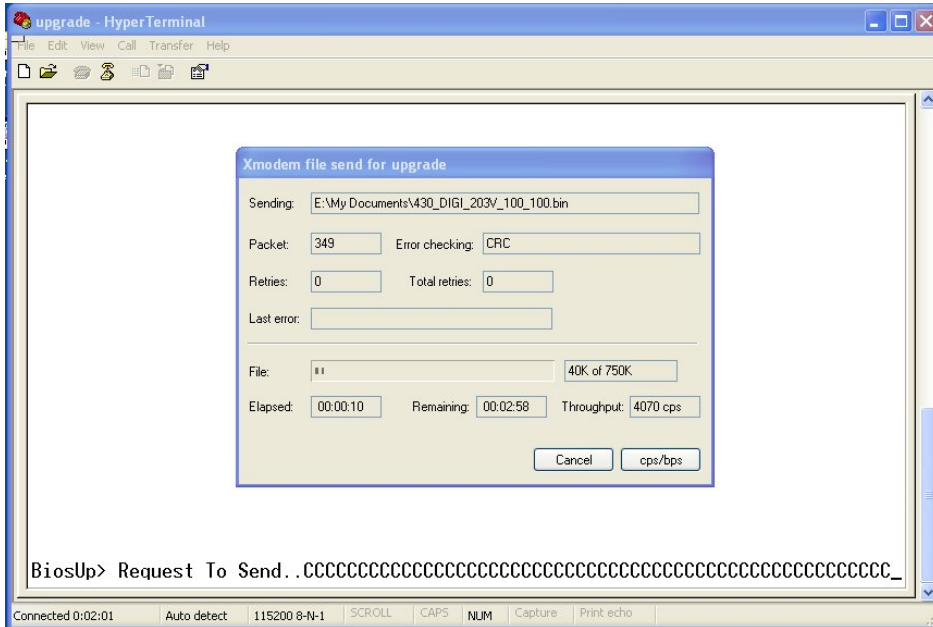


8. Type 'bm3' and press enter key.

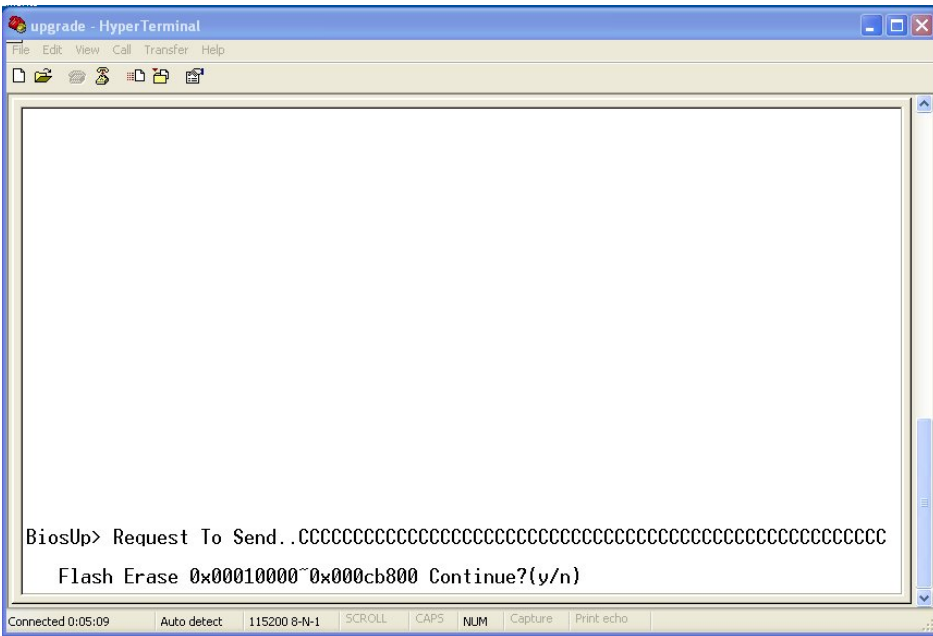
9. In the Program Upgrade - HyperTerminal" window, go to "Transfer" and then choose "Send File"



- ▶ In the Send File window,"File name" -> insert the filename with right path, or using Browse,choose the upgrade program, for example, C:\Upgrade\biosup.bin (find the exact path on your computer). "Protocol" -> choose "Xmodem".

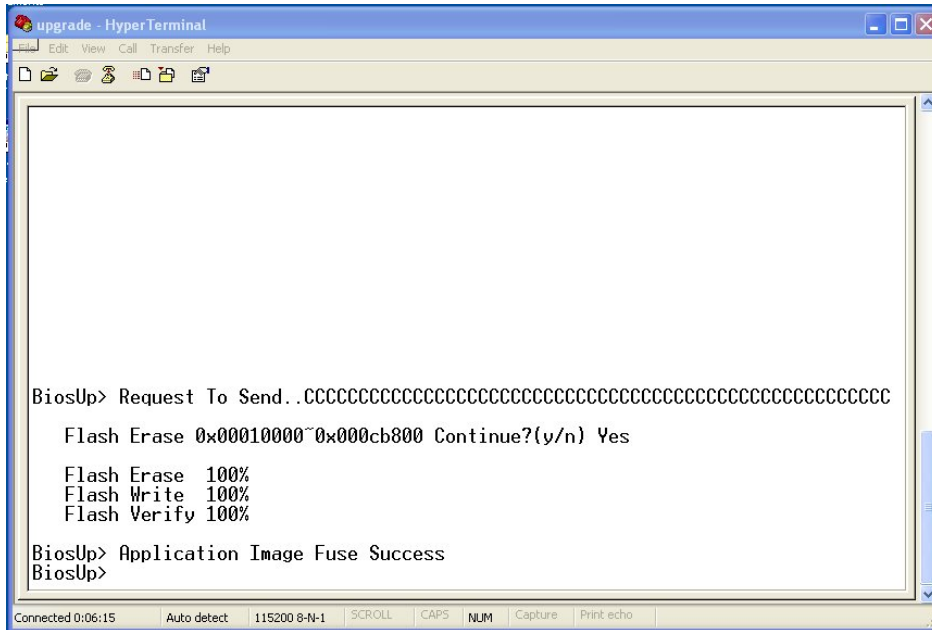


10. If following message appears type 'y'.



Flash Erase 0x00010000~0x000ae800 Continue?(y/n) YES

11. These are the final messages.



Flash Erase 100%
Flash Write 100%
Flash Verify 100%
BiosUp> Application Image Fuse Success

12. Type 'quit'. The BM3 will power off on it's own.

BiosUp> quit