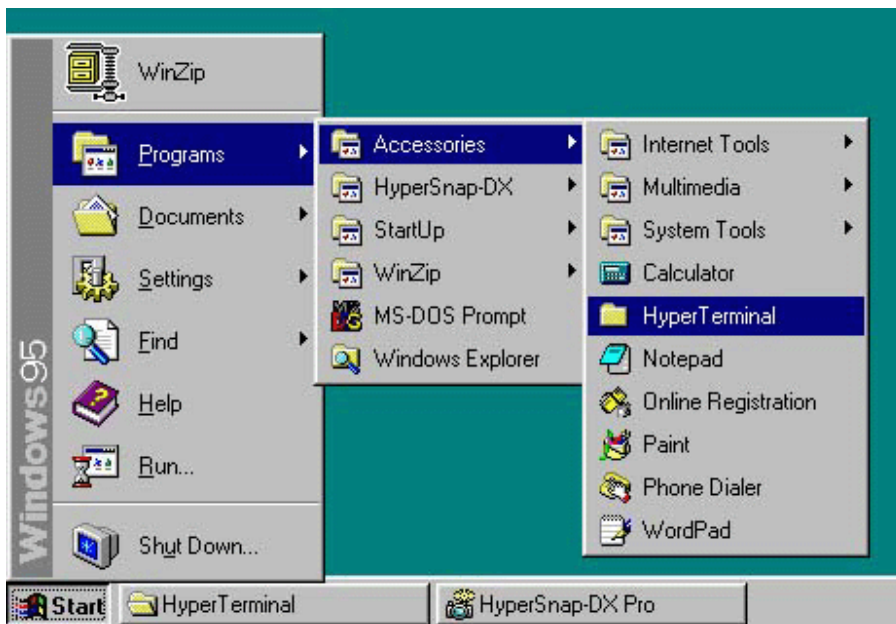


1. Connect the PC and CardioCare2000 with proper cable(serial null modem cable).
At this time, CardioCare2000(or CardioTouch3000) power is off.
2. Go to "HyperTerminal" from the "Start" button by clicking as shown in Fig.1.
Start -> "Program" -> "Accessories" -> "Hyper Terminal" folder.

Fig. 1



3. Double click the HyperTerminal execution file "Hypertrm". (Fig. 2)

Fig. 2



- In the Connection Description, Type Name as "Program Upgrade" or any name you choose and take the icon which is shown in Fig.3

Fig. 3



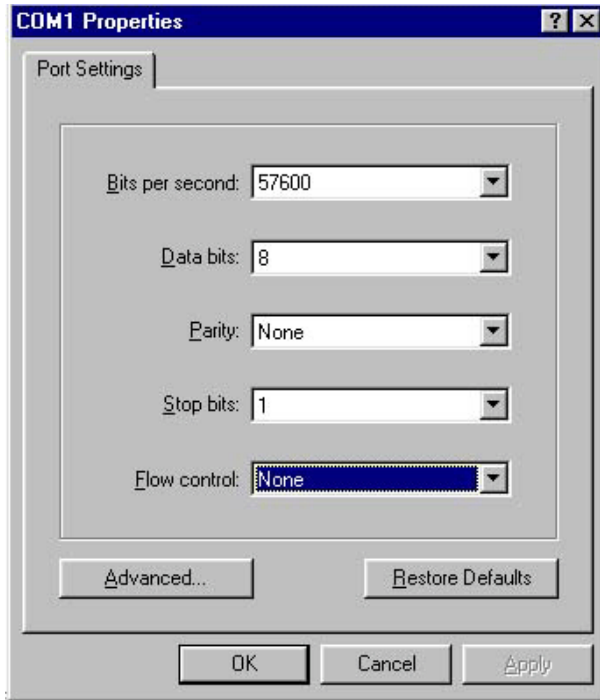
- In Fig. 4, Phone Number window, there are 4 blanks but you can just fill the last one ("Connect using") as Direct to Com1 or Direct to Com2 (It may show up as just Com1, Com2, Or Com3 depending on your computer configuration). Click the OK button.

Fig. 4



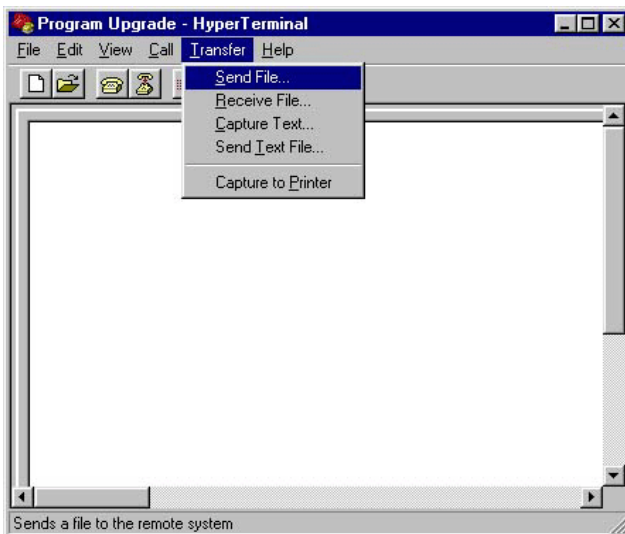
- 6. In the COM1(COM2) properties fill in the blanks as shown in Fig.5. Click the OK button.

Fig. 5



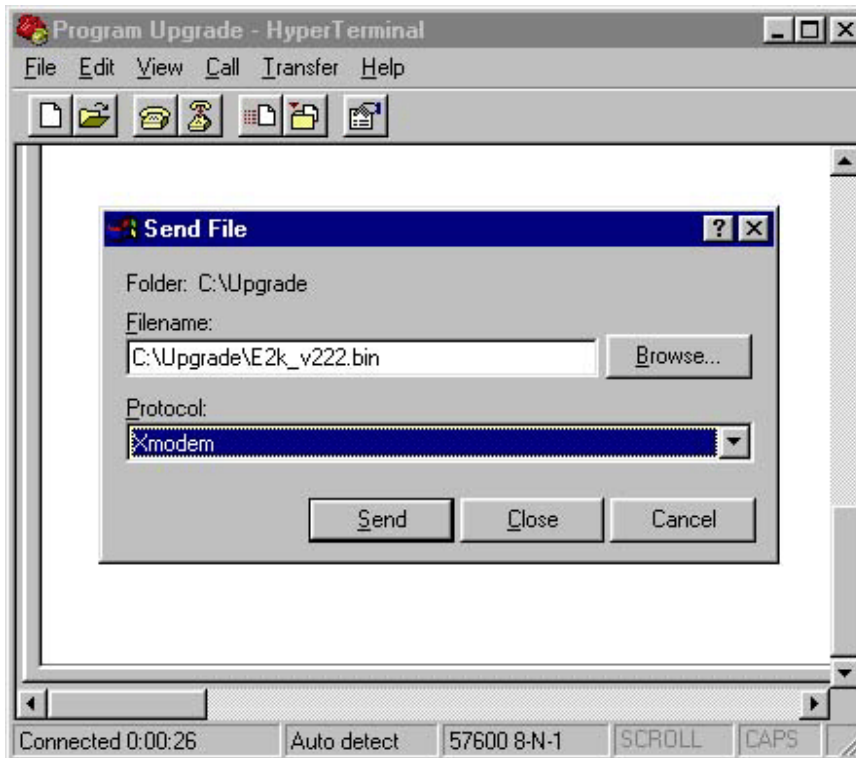
- 7. In the Program Upgrade - HyperTerminal" window, go to "Transfer" and then choose "Send File" like Fig. 6.

Fig. 6



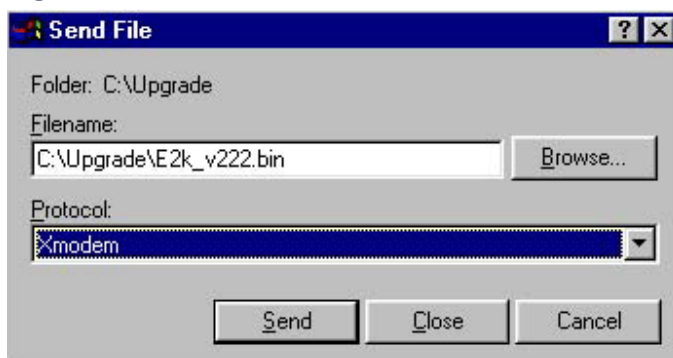
8. And then you can find small Send File window as shown in Fig.7

Fig. 7



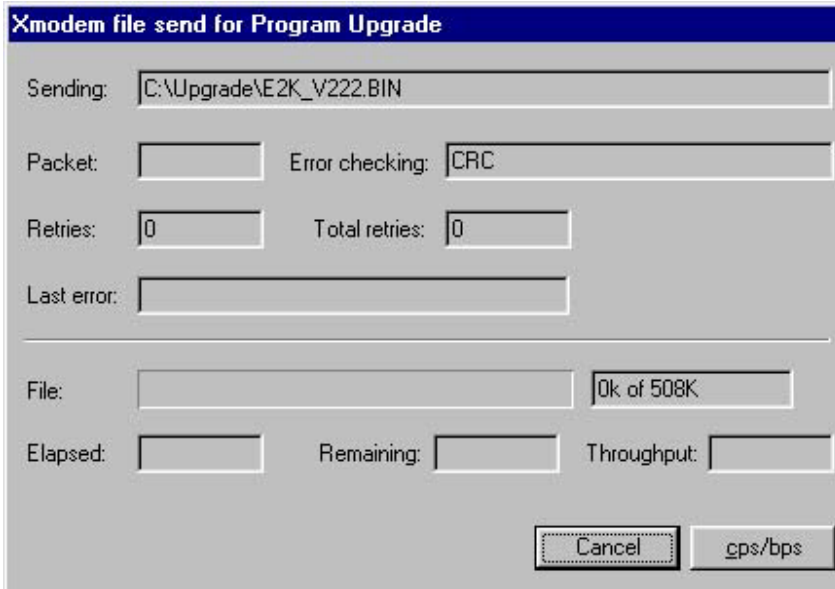
9. In the Send File window, "File name" -> insert the filename with right path, or using Browse, choose the upgrade program, for example, C:\Upgrade\E2k_v222.bin (find the exact path on your computer). "Protocol" -> choose "Xmodem". Simultaneously, turn on the ECG unit and press send. Note: you may have to turn off the unit and repeat this step if your timing is not correct.

Fig. 8



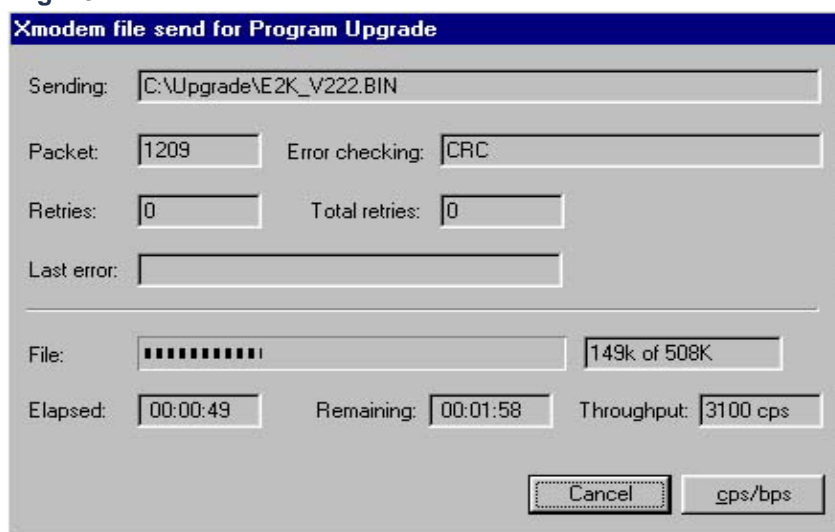
- 10. Another window will coming up like shown in Fig. 9; named Xmodem file send for Program Upgrade.

Fig. 9



- 11. You can see the state of data transfer in the Xmodem file send for program Upgrade window. It takes about 3 minutes to finish the process.(Fig. 10)

Fig. 10



15. Save it for next convenient use.
Then you can see the new file "Program Upgrade" as shown in Fig. 13.
Next time, just double click the new file.

Fig. 13

